

Goat Anti-GDE1 / MIR16 Antibody (internal region)
Purified Goat Polyclonal Antibody
Catalog # AF4255a**Specification**

Goat Anti-GDE1 / MIR16 Antibody (internal region) - Product Information

Application	WB, E
Primary Accession	O9NZC3
Other Accession	56209(mouse) , 60418(rat) , NP_057725.1
Reactivity	Mouse, Rat
Predicted	Human, Mouse, Rat, Dog
Host	Goat
Clonality	Polyclonal
Concentration	0.5
Calculated MW	37718

Goat Anti-GDE1 / MIR16 Antibody (internal region) - Additional Information**Gene ID** 51573**Other Names**

GDE1; glycerophosphodiester phosphodiesterase 1; 363E6.2; MIR16; RGS16-interacting membrane protein; membrane interacting protein of RGS16; membrane-interacting protein of RGS16

Dilution

WB~~1:1000

E~~N/A

Format

Supplied at 0.5 mg/ml in Tris saline, 0.02% sodium azide, pH7.3 with 0.5% bovine serum albumin. Aliquot and store at -20°C. Minimize freezing and thawing.

Immunogen

Peptide with sequence C-SLSHTGDGKPRYD , from the internal region of the protein sequence according to NP_057725.1.

Storage

Maintain refrigerated at 2-8°C for up to 6 months. For long term storage store at -20°C in small aliquots to prevent freeze-thaw cycles.

Precautions

Goat Anti-GDE1 / MIR16 Antibody (internal region) is for research use only and not for use in diagnostic or therapeutic procedures.

Goat Anti-GDE1 / MIR16 Antibody (internal region) - Protein Information**Name** GDE1 ([HGNC:29644](#))

Function

Hydrolyzes the phosphodiester bond of glycerophosphodiester such as glycerophosphoinositol (GroPIs) and glycerophosphoethanolamine (GroPEth), to yield a glycerol phosphate and an alcohol (By similarity). Hydrolyzes glycerophospho-N-acylethanolamines to N- acylethanolamines in the brain and participates in bioactive N- acylethanolamine biosynthesis such as anandamide (an endocannabinoid), N-palmitoylethanolamine (an anti-inflammatory), and N-oleoylethanolamine (an anorexic). In addition, has a lysophospholipase D activity by hydrolyzing N-acyl-lysoplasmeneylethanolamine (N-acyl- lysoPIsEt) to N-acylethanolamine. However lysophospholipase D activity is lower than glycerophosphodiester phosphodiesterase activity (By similarity). Has little or no activity towards glycerophosphocholine (By similarity).

Cellular Location

Cell membrane {ECO:0000250|UniProtKB:Q9JL55}; Multi-pass membrane protein. Cytoplasmic vesicle membrane {ECO:0000250|UniProtKB:Q9JL55}; Multi-pass membrane protein.
Note=Perinuclear vesicles and cell membrane {ECO:0000250|UniProtKB:Q9JL55}

Tissue Location

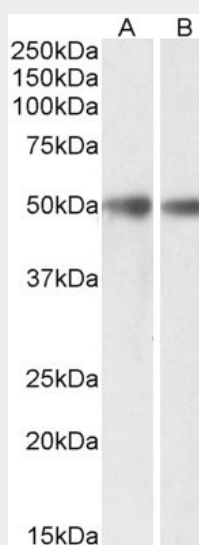
Widely expressed..

Goat Anti-GDE1 / MIR16 Antibody (internal region) - Protocols

Provided below are standard protocols that you may find useful for product applications.

- [Western Blot](#)
- [Blocking Peptides](#)
- [Dot Blot](#)
- [Immunohistochemistry](#)
- [Immunofluorescence](#)
- [Immunoprecipitation](#)
- [Flow Cytometry](#)
- [Cell Culture](#)

Goat Anti-GDE1 / MIR16 Antibody (internal region) - Images



AF4255a (0.3 µg/ml) staining of Mouse (A) and Rat (B) Brain lysates (35 µg protein in RIPA buffer). Primary incubation was 1 hour. Detected by chemiluminescence.

Goat Anti-GDE1 / MIR16 Antibody (internal region) - References

Genomic organization, characterization, and molecular 3D model of GDE1, a novel mammalian glycerophosphoinositol phosphodiesterase. Bachmann AS, Duennebier FF, Mocz G. Gene 2006 Apr 371 (1): 144-53.